



# HP PRO x360 FORTIS 11-INCH G9/G10

DURABLE AND VERSATILE  
x360 DESIGN FOR  
PRODUCTIVITY EVERYWHERE.





# HP FORTIS

Latin for strong, Fortis embodies the strength and durability of HP devices built for active and mobile users.

Built strong.  
Built to last.  
Built for everybody.



# WHAT'S NEW

HP PRO x360  
FORTIS 11-INCH G9/G10



## DURABILITY AND DESIGN

- Enhanced anchored skirt keys<sup>4</sup>
- Greater durability testing<sup>4</sup>
- Strengthened internal design with metal-protected battery
- New optional water-resistant pen garage<sup>1</sup>
- New color options (Jet Black, Jellyfish Blue). Not all colors available in all markets.

## EQUIPPED FOR PRODUCTIVITY

- Next gen Intel® processor<sup>9</sup>
- Optional HP Slim Rechargeable Pen<sup>56</sup> (Charges in 20 seconds for 70 minutes of use<sup>55</sup>) and optional built-in pen garage<sup>1</sup>
- 250 nit panel<sup>10</sup> for bright screen that is easy on the eyes
- Wi-Fi 6E<sup>2</sup> wireless LAN with MU-MIMO<sup>11</sup> for better connectivity (G10 only)
- Wireless 4G LTE<sup>3</sup> connectivity helps expand connectivity and enhance security (G9 only)
- HP AI Noise Reduction<sup>57</sup> uses noise-filtering technology to enhance audio and video conferencing experience.

## IT FRIENDLY MANAGEABILITY & SECURITY

- HP Sure Start<sup>12</sup> for self-healing protection after BIOS attacks
- HP Sure Admin<sup>13</sup> to help manage BIOS remotely (G10 only)
- Simplified access to internal components through the bottom cover for better serviceability

# HP PRO x360 FORTIS 11-INCH G9

Get right to the task at hand with the confidence that the ruggedized HP Pro x360 Fortis will keep up with you—however, wherever, whenever. This x360 features robust online collaboration and productivity tools to help complete your daily activities.



## DURABILITY TO HELP REDUCE DOWNTIME

Protect your HP Pro x360 Fortis from daily wear and tear—helping reduce downtime and keep you purpose-focused. Built-in reinforcement helps prevent damage from spills<sup>54</sup> and drops for active days on-the-go.



## EQUIPPED FOR PRODUCTIVITY

Manage tasks in any environment with a 360-degree hinge and optional world-facing camera.<sup>1</sup> Easily and confidently interact with content using the keyboard, the touchscreen, or the optional rechargeable pen with built-in garage.<sup>1,56</sup>

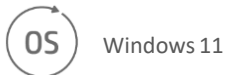


## IT-FRIENDLY MANAGEABILITY

Manage and protect your HP Pro x360 Fortis with easy-to-use manageability features<sup>14</sup> and HP Wolf Security<sup>8</sup>. Help IT reduce hands-on serviceability, allowing more time for higher-level, strategic initiatives.



PN: TBD  
Starting ILP: TBD



Latest Intel® multi-core processor<sup>9</sup> with up to 8GB memory<sup>1</sup> and up to 64GB eMMC storage<sup>18</sup>



HP Easy Clean 2.0<sup>15</sup> to allow you to clean your laptop without powering down



Optional embedded CAT9 WWAN<sup>3</sup>



Long battery life and HP Fast Charge<sup>30</sup>



# HP PRO x360 FORTIS 11-INCH G9/G10

## PRODUCT WALKTHROUGH

### TEXTURED SURFACE

Hides fingerprints and minor dirt smudges

### ULTRALIGHT DESIGN

Starts from:  
1.47kgs / 3.24lbs

### CORNING® GORILLA® GLASS 3 DAMAGE-RESISTANT TOUCH SCREEN

Corning® strengthened glass for protection from damage

### FAST CONNECTIONS

4G LTE<sup>3</sup> (**G9 only**)  
Wi-Fi 6E<sup>2</sup> (**G10 only**)  
MU-MIMO<sup>11</sup>  
HP Extended Range Wireless LAN<sup>16</sup>  
WWAN<sup>3</sup> with internal SIM card slot (**G9 only**)

### POWERFUL PROCESSING

**G9:** Intel® Celeron® DC & QC processors and Intel® Pentium® processors<sup>9</sup>  
**G10:** Intel® 12<sup>th</sup> Gen Core™ i3/i5 processors<sup>9</sup>

### HD WEBCAM

Dual array microphone+ HD webcam and HP Privacy Camera

### AI-BASED NOISE REDUCTION<sup>57</sup>

Noise-filtering technology to enhance audio and video conferencing experience.

### BUILT TO PERFORM

Up to 8 GB RAM<sup>1</sup> and  
64 GB eMMC<sup>18,58</sup>, up to 256GB SSD<sup>17</sup> storage options

### GARAGED PEN

Optional HP Slim Rechargeable Pen, stored in pen garage on unit<sup>1, 56</sup>

### DURABLE KEYBOARD

Enhanced pick-resistant anchored skirt keyboard, spill-resistant protection<sup>54</sup>. Wipeable with household wipes<sup>7</sup>.

### 2<sup>nd</sup> WEBCAM<sup>1</sup>

Optional 5MP autofocus world-facing Webcam





# SACRIFICE NOTHING

## SLIM DESIGN WITH PLENTY OF PORT SPACE

BARREL TYPE  
POWER  
CONNECTOR

RJ-45 PORT

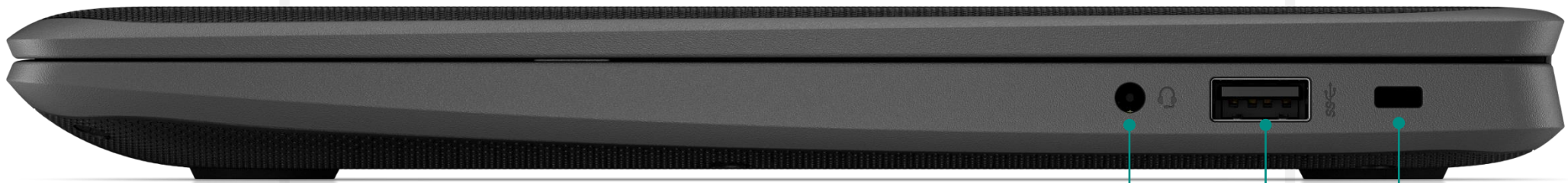
HDMI 1.4b

USB-A 3.1 GEN 1  
SuperSpeed USB  
Type-A 5 Gbps  
signaling rate port

USB-C®  
SuperSpeed USB Type-C® 5 Gbps signaling  
rate port (Power delivery, DisplayPort™)



Left  
profile



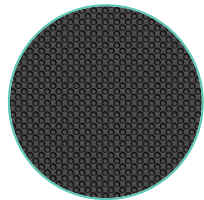
Right profile

3.5MM  
AUDIO  
JACK/MIC  
COMBO

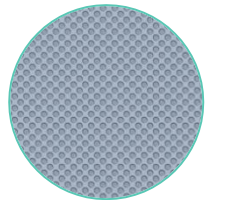
USB-A 3.1 GEN  
1  
SuperSpeed USB  
Type-A 5 Gbps  
signaling rate port

NANO  
LOCK  
SLOT

# COLOR OPTIONS



**Jet Black**



**Jellyfish Blue**



Not all color options available in all territories

HP Confidential. For use with HP customers under HP CDA only.







# HP PROBOOK 400 SERIES G9

AN IDEAL CHOICE  
FOR GROWING  
BUSINESS





# WHAT'S NEW

HP PROBOOK  
440 14" G9 Notebook PC  
450 15.6" G9 Notebook PC



## GROWING YOUR BUSINESS WITH LATEST TECHNOLOGY

- 12<sup>th</sup> Gen Intel® processor<sup>1</sup>
- Upgrade discrete graphic to NVIDIA® GeForce® MX570 with 2GB GDDR6<sup>3</sup>
- Support WWAN<sup>23</sup> as external SIM<sup>9</sup>
- Configurable second SSD Storage
- HDMI 2.1
- Upgrade to Wi-Fi 6E<sup>20</sup>
- Optional long battery life option<sup>10</sup> (51.3Whr)<sup>44</sup>
- HP Eye Ease<sup>11</sup> supported in HP Sure View Reflect<sup>6</sup> panel

## ENHANCED SECURITY

- Secure and manageable PC for growing business
- HP Wolf Pro Security for Business<sup>5</sup>: HP Sure Start Gen7<sup>12</sup>, HP Sure Sense<sup>13</sup>, HP Sure Click<sup>16</sup>, HP Sure View Reflect<sup>6</sup>, HP Sure Erase<sup>36</sup>, Self-encrypting drive option
- Optional Tamper Lock<sup>17</sup> providing business protection
- Tile™<sup>21,22</sup> support to monitor the physical location of your PC

## NEW TO THE SERIES

- IR camera or HD Camera with Temporal Noise Reduction<sup>18</sup>
- HP AI Noise Reduction<sup>46</sup>
- AI Content Classification, HP Super Resolution, HP Background Adjustment, Light improvement
- HP Quick Drop<sup>6</sup>, HP Quick Touch<sup>39</sup>, myHP<sup>43</sup>

# PRODUCT WALKAROUND

## LIGHTWEIGHT DESIGN

440/445 from 3.03lb/1.38kg  
450/455 from 3.83lb/1.74kg

## HP AUDIO

HP Noise Reduction Software<sup>46</sup>, AI Based Clear Audio and AI Content Classification

## AWARE OF ITS SURROUNDINGS

AI based optimization to maximize performance, comfort, and responsiveness.<sup>49</sup>



## TEMPORAL NOISE REDUCTION HD CAMERA<sup>18</sup>

For high resolution video chats, more accurate color, HP Super Resolution<sup>18</sup>, and backlight/lowlight improvement. HP AI Noise Reduction<sup>46</sup>/Dynamic Voice Leveling<sup>72</sup>/Sound Calibration ready in 2022 summertime.

## PRIVACY SCREEN

Protect your data against visual hacking with HP Sure View Reflect (14'')<sup>6</sup>, an optional integrated privacy screen.

## SUPERB KEYBOARD

Backlit keyboard adjustable brightness. Programmable key to customize with your most used apps or commands.

## OPTIMIZE YOUR BATTERY

Customize charging options with the HP Power Manager dashboard.<sup>47</sup>

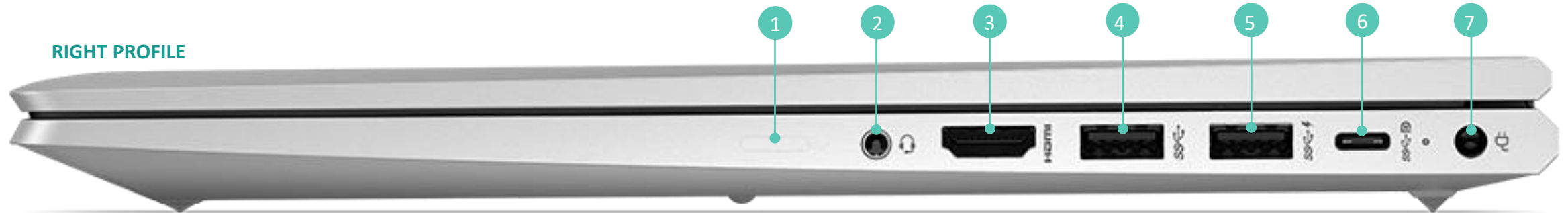


# HP PROBOOK 400 SERIES G9

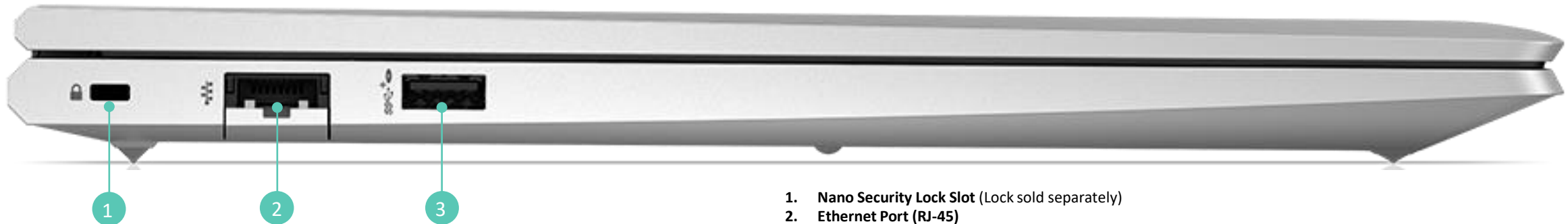
Slim Design With Plenty Of Port Space

1. Nano SIM Slot (Select Models)
2. Audio Combo Jack
3. AMD™2 HDMI 2.0b, Intel® 1 HDMI 2.1 (Cable not included)
4. SuperSpeed USB Type A 5Gbps signaling rate port
5. SuperSpeed USB Type A 5Gbps signaling rate port
6. SuperSpeed USB Type C 10Gbps signaling rate port (USB Power Delivery, DisplayPort™ 2.1)
7. Power Connector

RIGHT PROFILE



LEFT PROFILE



1. Nano Security Lock Slot (Lock sold separately)
2. Ethernet Port (RJ-45)
3. SuperSpeed USB Type A 5Gbps signaling rate port

# SUPERB KEYBOARD EXPERIENCE

- ✓ HP Sure View Reflect (14") key<sup>6</sup>
- ✓ Backlit keyboard adjustable brightness
- ✓ Programmable key to customize with your most used apps or commands
- ✓ Rubber dome keys provide a consistent and quiet typing experience
- ✓ Fingerprint reader







# HP PROBOOK FORTIS 14-INCH G9/G10

ENGINEERED TO BE DURABLE  
FOR PRODUCTIVITY  
EVERYWHERE.





# HP FORTIS

Latin for strong, Fortis embodies the strength and durability of HP devices built for active and mobile users.

Built strong.  
Built to last.  
Built for everybody.



# MORE SCREEN IN A SMALLER FOOTPRINT



Switch between and manage multiple tasks simultaneously with an optimized **14-inch diagonal anti-glare screen with optional Full HD.**<sup>17</sup> The larger, crystal-clear screen provides an enhanced view for heavy reading and complicated projects.



Work on a PC with a bright, 250-nit panel display<sup>10</sup> for a better overall experience during long days.

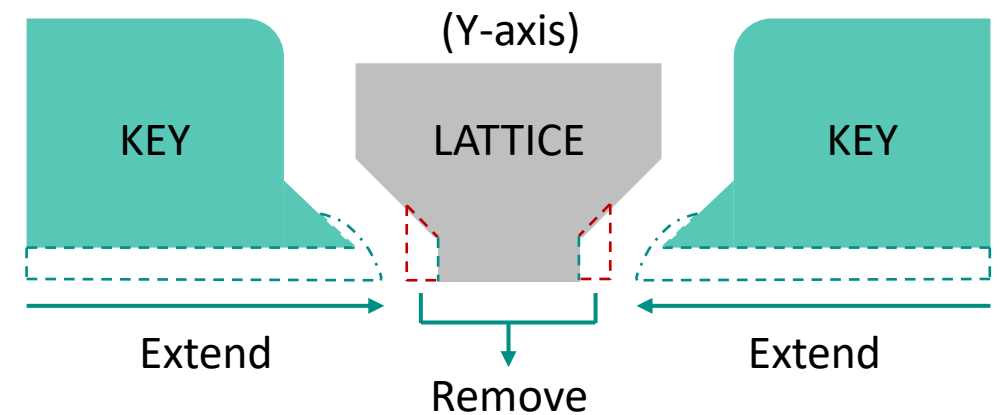
Narrow bezels and almost 80% screen-to-body ratio<sup>28</sup>





# DURABLE KEYBOARD

Reduce risk of damage to keyboards with **pick resistant, full-skirted anchored keys**. Coupled with an extra layer of protection under the keys, this sturdy keyboard resists spills up to 350ml (11.8 oz).<sup>55</sup>





# DURABLE CONSTRUCTION

BUILT TO LAST

---

UNDERGOES  
**19**

MIL-STD 810H  
TESTS<sup>5</sup>

**120k**  
HOURS

HP TOTAL TEST  
PROCESS<sup>3</sup>

The real challenge of building thin, light, and powerful is to remember the customer and where this device will be used

– in a mobile environment – a *moving* environment.

Quality can't be sacrificed for anything.

