



**ASUS**

ASUS **Education** Portfolio

A NEW ERA  
OF LEARNING

---

**ASUS**   
EDUCATION

# WHY **ASUS**

ASUS is passionate about technology and driven by innovation. We dream, we dare, and we strive to create an effortless and joyful digital life for everyone.

We're always in search of incredible ideas and experiences, and we aspire to deliver the incredible in everything we do.



# FORTUNE WORLD'S MOST ADMIRED COMPANIES® 2020

Fortune has praised us as one of the World's most admired companies for 5 years. They rated us as one of the top leading companies in the tech industry.



Forbes has named ASUS among the Top Regarded Companies annual survey that evaluates companies on topics such as trustworthiness, social conduct, performance of the company's product or service and the company as an employer.

# Interbrand

We have topped Interbrand's annual brand survey for the past several years. We have been ranked as Taiwan's most valuable brand for 7 consecutive years.



ASUS has been named as a Top 100 Global Technology Leader by Thomson Reuters. The program identifies the tech industry's most operationally sound and financially successful organizations with excellent products and services.

| *Over 14,500*

*Employees worldwide*

| *5,000+*

*World-class  
R&D team*

| *200+*

*Countries*

| *57,156*

*Awards Won  
Since 2001*

| *72,477*

*Green Certifications  
won in 2019 alone*

# BUILT WITH THE ENVIRONMENT IN MIND

---

ASUS laptops are built with the environment in mind. Exclusive technologies help ASUS laptops optimise energy use to meet the industry's highest environmental certifications. ASUS respects the environment while lowering your operating costs.







## PRODUCING

Since 2013, ASUS introduced postconsumer recycled plastic as mechanical housing in commercial notebook.

### Achievement :

Using post-consumer recycled plastic, at least 20% estimated reduction of carbon emission in manufacturing phase can be expected by replacing conventional materials.



## PACKAGING

ASUS continuously designs exclusive technologies that raise energy efficiency on hardware and software.

### Achievement :

In 2012, 100% of our new laptop computers were Energy Star qualified products. Moreover, the average power consumption of ASUS NBs is 45% lower than Energy Star standard.



## USING

Since 2012, packaging design department improved the folding structure of the packaging materials, this method received relevant patents.

### Achievement :

The volume of the packaging for 15 inches notebook was 39% smaller than the old one.



## RETIRING

Galvanized support for recycling programs and ensures that charitable organizations benefit from these initiatives.

### Achievement :

Eliminates harmful substances from the production process and uses recyclable packaging materials.

## Meet the industry's highest environmental certifications

In 2020 alone, ASUS earned 69,965 green certification from some of the most prestigious international organizations around the world.

# 69,965

Green Certifications



# ASUS DNA

To empower a future generation, ASUS is dedicated to solving unique challenges for facing today's students and educators. Our comprehensive product range provides the tools needed for teaching or learning, ensuring that no-one is left behind. We categorize our DNA into four distinct areas whenever we design a product for education. We cater for students from reception to higher education, offer essential features for efficient learning, provide reliability in the classroom environment and even consider the needs of IT staff with easy-maintenance designs.

## Education reliability

### Reinforced hinge connection



Easy  
Rubber Grip



Military-Grade  
Reliability



All-Rounded  
Rubber Bumper



Scratch-Resistant  
Durable Finish



Tamper-Resistant  
Keyboard



Spill-Resistant  
Keyboard



Robust  
I/O Ports



Reinforced  
Hinge Connection



## Design for K12

Military-grade durability



Antimicrobial  
C Part



AI noise  
Cancelling MIC



Noise Reduction  
Camera



Webcam Privacy  
Shield



Anti-Glare  
Display



Eyes Protection  
Display



Multi-Touch  
Point Panel



4096 Pressure  
Garage Stylus

## Essential learning features

All-day battery



First Additional  
SSD Slot



Power & Wi-Fi  
Indicator



Wi-Fi 5/WiFi 6



4G LTE



A Full Set of  
I/O Port



Type C Power  
Delivery



11 Hours  
Battery Life



180° Lay-Flat  
Hinge

## Serviceable design for IT staff

Reinforced hinge connection



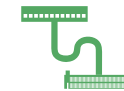
Easy Maintenance  
Modular Design



One-Sized and  
Anti-Failing Screw



Easy Panel  
Maintenance



Anti-Loosening  
LVDS Cable



# BENEFITS OF CHROMEBOOKS

---

## Elevate education with ASUS Chromebooks



ASUS Chromebooks make learning more effective and engaging.

Google Classroom assists teachers with class management

The Google Admin Console centrally manages hundreds of thousands of devices

Google Play Store allows you to discover millions of apps

G Suite provides productivity apps that keep students connected and empower students to collaborate and communicate

Learning materials can be accessed on any device, from anywhere, online or offline

Simplified deployment gives IT administrators access to device policies

24/7 IT admin support at no additional cost

Advanced security and automatic updates ensure that school data is always safe and secure



# ASUS Chromebook Flip CR1 (CR1100F)

## The rugged, student-centric study mate

- 11.6" HD (1366 x 768) IPS, NTSC 50%, 250 nits, Touch display
- Up to Pentium N6000 Processor, 16GB LPDDR4x RAM & 128GB eMMC storage
- 2x USB 3.2 Gen 1 Type-A, 2x USB 3.2 Gen 1 Type-C support display / power delivery, 1x 3.5mm Combo Audio Jack and Micro SD card reader
- Up to 12 hours battery life
- 360° hinge offers 4 type of usage (Laptop, Tent, Tablet, Slate mode)
- 8MP World-facing camera and optional garaged stylus
- Garaged stylus can be used up to 45min with only 15sec charged (optional)



Military-grade reliability



All- rounded rubber edges



Easy maintenance modular design



Antimicrobial C-part



Spill-resistant keyboard



# CHROMEBOOK FOR STUDENTS

Running on the fast, simple and secure Chrome OS, ASUS Chromebooks deliver all-day battery life, built-in security, fast boot-ups and performance with ease of use. ASUS Chromebooks are the best laptops to make studying more of a pleasure than a chore!



US MIL-STD 810G military grade durability



Splash-proof keyboard



All-rounded rubber edges for durability



Modular product design



Stylus support



Anti-glare display



## C214

- 11.6" HD (1366 x 768), 235nits, multi-touch display
- Up to Intel® Celeron® N4020 Processor
- Up to 16GB LPDDR4 RAM and 32G eMMC storage
- 1x USB 3.2 Gen 1 Type-A, 2x USB 3.2 Gen 1 Type-C support display / power delivery, 1x 3.5mm Combo Audio Jack and Micro SD card reader
- Up to 12 hours battery life
- 360° hinge offers 4 type of usage (Laptop, Tent, Tablet, Slate mode)



## CR1100C

- 11.6" HD (1366 x 768) 220nits, anti-glare display
- Up to Pentium N6000 Processor
- Up to 16GB LPDDR4x RAM & 128GB eMMC storage
- 2x USB 3.2 Gen 1 Type-A, 2x USB 3.2 Gen 1 Type-C support display / power delivery, 1x 3.5mm Combo Audio Jack and Micro SD card reader
- Up to 12 hours battery life
- 180° lay flat hinge for easy screen sharing
- Anti-bacteria on C part to indirectly protect children's health.



## CR1100F

- 11.6" HD (1366 x 768) IPS, 250 nits, touch display
- Up to Pentium N6000 Processor
- Up to 16GB LPDDR4x RAM & 128GB eMMC storage
- 2x USB 3.2 Gen 1 Type-A, 2x USB 3.2 Gen 1 Type-C support display / power delivery, 1x 3.5mm Combo Audio Jack and Micro SD card reader
- Up to 12 hours battery life
- 360° hinge offers 4 type of usage (Laptop, Tent, Tablet, Slate mode)
- Anti-bacteria on C part to indirectly protect children's health.
- 8MP World-facing camera and optional garaged stylus



## C204

- 11.6" HD (1366 x 768), 250nits, anti-glare display
- Up to Intel® Celeron® N4020 Processor
- Up to 4G LPDDR4 RAM and 32G eMMC storage
- 2 x USB 3.2 Gen1 Type-C™ support display & support power delivery, 2 x USB 3.2 Type-A, and 1 x microSD card reader
- Up to 11 hours battery life
- 180° lay-flat hinge for stress-free sharing



## CZ1000

- 10.1" FHD (1920 x 1080) touch display
- MediaTek 8183 processor
- Up to 4GB LPDDR4X RAM and 128G EMMC storage
- 1x USB 2.0 Type-C and 1x 3.5mm Combo Audio Jack
- Up to 11 hours battery life
- Detachable design offers 3 type of usage (Laptop, Stand, Tablet) mode for easy transformation full-size keyboard for comfortable typing experience
- 2MP front-facing camera & 8MP rear camera
- Garaged Stylus and simultaneously charging when stored (15 second of charging provides 45 minutes of usage time)

1. Specifications may vary by region and country.

2. Actual battery life depends on usage, specifications, applications and environment, among other factors.

# CHROMEBOOK FOR TEACHERS

ASUS Chromebooks provide educators with all the tools they need to deliver quality education to their students. Featuring NanoEdge displays, lightweight designs and stylus support touch displays enables teachers to create and collaborate with students, anywhere, easily.



NanoEdge Display



Thin and light



Stylus support



## C433

- 14" (16:9) FHD (1920 x 1080) multitouch four-sided NanoEdge display
- Up to Intel® Core™ i5-8200Y processor
- Up to 8GB LPDDR3 RAM and 128GB eMMC Storage
- 1x USB 3.2 Gen 1 Type-A, 2x USB 3.2 Gen 1 Type-C support display / power delivery, 1x 3.5mm Combo Audio Jack and Micro SD card reader
- Up to 10 hours battery life
- 360° ErgoLift hinge offers 4 type of usage (Laptop, Tent, Tablet, Slate mode)
- 720p HD camera and backlit chiclet keyboard



## CB5500/CB5400

- 15.6" / 14" FHD (1920 x 1080) touch NanoEdge display
- Up to 11th Gen Intel® i7 processors with Iris Xe graphics
- Up to 16GB LPDDR4x memory and 512GB SSD storage
- 1x USB 3.2 Gen 2 Type-A, 2x USB 3.2 Gen 2 Type-C support display / power delivery, 1x HDMI 2.0a and Micro SD card reader
- Up to 11 hours all-day-long battery life for work and play
- 360° ErgoLift hinge offers 4 type of usage (Laptop, Tent, Tablet, Slate mode)
- Dual-speakers with Harman/Kardon certified audio
- Backlit chiclet keyboard and optional garaged USI stylus



## CB3400

- 14" FHD (1920 x 1080) touch NanoEdge display
- Up to 11th Gen. Intel® Core™ i3 / i5 / i7 processors
- Up to 16GB LPDDR4-4266MHz dual channel memory and 512GB SSD storage
- 2x USB 3.2 Gen 1 Type-A, 2x USB 3.2 Gen 1 Type-C support display / power delivery, 1x 3.5mm Combo Audio Jack and Micro SD card reader
- Up to 11 hours battery life
- 360° ErgoLift hinge offers 4 type of usage (Laptop, Tent, Tablet, Slate mode)
- Dual cameras at both user-facing and world-facing for meeting and tablet mode
- Backlit chiclet keyboard and optional garaged USI stylus



## CB9400

- 14" FHD (1920 x 1080) touch NanoEdge display
- Up to 11th Gen Intel Core™ i7 processor with Iris Xe graphics
- Up to 16GB LPDDR4x RAM and M.2 NVMe PCIe® 3.0 512GB SSD storage
- 1x USB 3.2 Gen 2 Type-A, 2x Thunderbolt™ 4 supports display / power delivery, 1x USB3.1-Type C (Gen 2), 1x HDMI 2.0b, 1x 3.5mm Combo Audio Jack and Micro SD card reader
- Up to 14 hours battery life
- Ultralight design at 1.05kg for on-the-go workers
- Built-in fingerprint sensor and physical webcam shield for added security



## CM3300

- 10.5" WUXGA (1920x1200) touch display
- MediaTek Kompanio 500 processor
- Up to 4GB LPDDR4X RAM and 128G eMMC storage
- 1x USB 2.0 Type-C and 1x 3.5mm Combo Audio Jack
- Up to 12 hours battery life
- Detachable design offers 3 type of usage (Laptop, Stand, Tablet) mode for easy transformation full-size keyboard for comfortable typing experience
- 2MP front-facing camera & 8MP rear camera
- Garaged Stylus and simultaneously charging when stored (15 second of charging provides 45 minutes of usage time)

1. Actual battery life depends on usage, specifications, applications and environment, among other factors.  
2. Specifications may vary by region and country.



LITTLE  
LONDON  
CASE  
STUDY

---

Little London Community  
Primary School

Little London  
Community Primary  
is proud to be  
working in  
partnership with  
Leeds City Academy



**ASUS was thrilled to work with and supply ASUS C202 Chromebooks to Little London Primary School in Leeds on this truly inspiring project. The Schools mission was to supply a Chromebook to every pupil in the School and to enable them to use a device both at School and also at home. Before the students received the ASUS Chromebooks, very few had access to a computer or Internet access.**



*Jill Wood, Headteacher*

**Tell us a little bit about yourself and your school**

My name is Jill Wood and I am the Head teacher of Little London, a three form entry primary school situated right in the heart of Leeds. A wonderful area to work but an area with lots of challenges. We have a very diverse population here at Little London with over 82 languages spoken across the school and wonderful parents who want the best for their children.

**What were your main motivations in sourcing a new IT solution?**

We have been trying to increase our digital ability across the school, to make sure technology was playing the right sort of part in our students' education. We were also uncomfortable with the fact that the children were only accessing technology on their set timetabled lessons so we wanted to see technology becoming a part of their everyday learning, whilst in school as well as at home.

**What did you do to find the right device/supplier?**

We had a long conversation with our IT support in school, a wonderful company called Next Generation IT. We expressed our thoughts around implementing a solution to the school and they took that all away and ultimately suggested the ASUS C202 Chromebook. What swayed us on this decision was that this device seemed to be very robust, with a simplified operating system for the students as well as it being sustainable for the next few years without a need to refresh the device.

**What has been the initial feedback from students and teachers?**

The children were incredibly excited and they love the fact that they can take the device home and continue learning when not at school. Teachers have also been really positive about the Chromebooks and they have seen a massive increase in work from many of our children.

**How has this new solution impacted your school?**

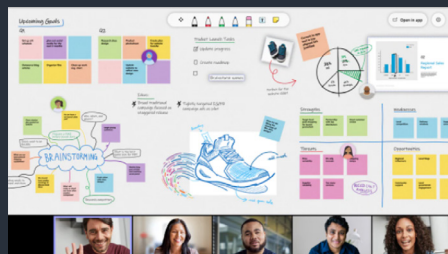
The implementation of the Chromebooks has been a real positive for the school, we have seen those who wrote very little in books now writing a lot on their Chromebook, which is great to see. Everything is very secure on the devices so there is no risk of the children accessing all parts of internet and the children are now finding learning fun! So we feel all our children, all of our children are now part of the future.

# Windows 11

## Benefits of Windows-Based Laptops

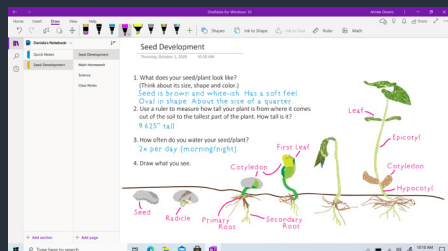
### Unlock limitless learning with ASUS Windows-based laptops

ASUS Windows laptops are affordable and easy to manage. With technology that transforms classroom time, they allow educators to focus on delivering personalized learning experiences that help enable better learning outcomes. They empower students to navigate learning easily and develop social and emotional skills, with free tools available to deliver tailored learning in key subjects like reading, writing, and mathematics.



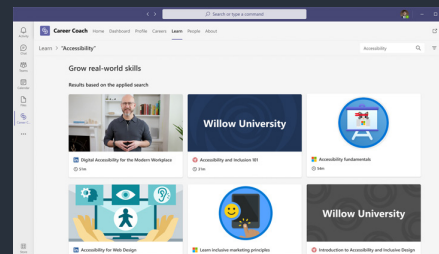
### Collaboration and brainstorming with Microsoft Whiteboard

The collaborative digital canvas in Microsoft 365 for effective meetings and engaging learning, facilitating distance learning, run collaborative lessons and maximize learning outcomes with ink, notes, stickers and more.



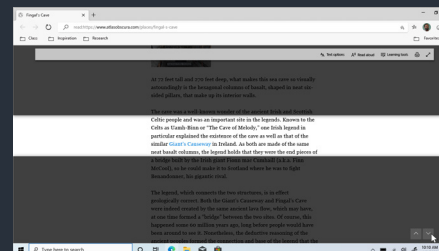
### Easier classroom organization with OneNote for Education

With a personal workspace for every student, a content library for handouts, and a collaboration space for lessons and creative activities, OneNote for Education empowers students to create their best work.



### Personalized career guidance with Career Coach

The journey from education to employment isn't always straightforward. Career Coach, a Microsoft Teams app powered by LinkedIn, can help each student discover their unique career path, grow real-world skills, and build their network – all in one place.



### Make online learning easy, safe and fun with Microsoft Edge

Microsoft Edge offers the most comprehensive set of built-in learning and accessibility tools on the web. Built-in learning tools, like Immersive Reader and Read Aloud, let students listen to content such as podcasts or read information line by line, with Focus mode.

# ASUS BR1100F

## Strong, flippable power for learning

- 11.6" HD (1366x768) 250nits, NTSC: 50%, touch display
- Up to Intel® Pentium® N6000 processor, 16GB DDR4 RAM and 1TB PCIe SSD storage
- 1x USB 2.0 Type-A, 1x USB 3.2 Gen 1 Type-A, 1x USB 3.2 Gen 2 Type-C support power delivery, 1x HDMI 1.4, 1x 3.5mm Combo Audio Jack, 1x RJ45 Gigabit Ethernet and Micro SD card reader
- Up to 10 hours battery life
- 360° hinge offers 4 type of usage (Laptop, Tent, Tablet, Slate mode)
- Garaged stylus can be used up to 45min with only 15sec charged (optional)



Military-grade reliability



All-rounded rubber edges



Easy maintenance modular design



Antimicrobial C-part



4G LTE





# WINDOWS-BASED LAPTOPS

With the right tools, students can achieve any goal. ASUS has created Windows-based laptops with versatile features that teachers and students can use to create and collaborate.



MIL-STD-810G  
military-grade  
durability



Splash-proof  
keyboard



AI Noise-Canceling  
technology



Anti-glare display



Long-lasting  
battery life



## BR1100

- 11.6" HD (1366x768) 250nits, NTSC: 50%, touch display
- Up to Intel® Pentium® N6000 processor
- Up to 16GB DDR4 RAM and 1TB PCIe SSD storage
- 1x USB 2.0 Type-A, 1x USB 3.2 Gen 1 Type-A, 1x USB 3.2 Gen 2 Type-C support power delivery, 1x HDMI 1.4, 1x 3.5mm Combo Audio Jack, 1x RJ45 Gigabit Ethernet and Micro SD card reader
- Up to 10 hours battery life
- 360° hinge offers 4 type of usage (Laptop, Tent, Tablet, Slate mode)
- Anti-bacteria on C part to indirectly protect children's health
- LTE connection to access the internet wherever you're (optional)
- Garaged stylus can be used up to 45min with only 15sec charged (optional)







### ASUS E410

- 14" FHD (1920x1080) anti-glare display
- Up to Intel® Pentium® N5030 processor
- Up to 8GB DDR4 RAM and 512GB PCIe SSD storage
- 1x USB 2.0 Type-A, 1x USB 3.2 Gen 1 Type-A, 1x USB 3.2 Gen 1 Type-C, 1x HDMI 1.4, 1x 3.5mm Combo Audio Jack and Micro SD card reader
- Up to 12 hours battery life
- 180° lay flat hinge for easy screen sharing
- Innovative NumberPad for convenient numerical input



### ASUS P1411/P1511

- 14/15.6" FHD (1920x1080) anti-glare display
- Up to 11th Gen. Intel® Core™ i7 processor
- Up to 16GB DDR4 RAM and 1TB HDD + 1TB PCIe SSD storage
- 1x USB 3.2 Gen 1 Type-A, 1x USB 3.2 Gen 1 Type-C, 2x USB 2.0 Type-A, 1x HDMI 1.4, 1x 3.5mm Combo Audio Jack and Micro SD card reader
- NanoEdge slim bezel design with 82% screen-to-body ratio
- 180° lay flat hinge for easy screen sharing
- Built-in fingerprint sensor



### TP1400

- 14" FHD (1920x1080) glossy touch display
- Up to Intel® Pentium® N6000 processor
- Up to 8GB DDR4 RAM and 512GB SSD storage
- 1x USB 2.0 Type-A, 1x USB 3.2 Gen 1 Type-A, 1x USB 3.2 Gen 1 Type-C, 1x HDMI 1.4, 1x 3.5mm Combo Audio Jack and Micro SD card reader
- NanoEdge slim bezel design with 84% screen-to-body ratio
- Support active ASUS Pen (with battery) for intuitive input
- Fingerprint sensor or NumberPad option available



### B3000

- 10.5" WUXGA (1920x1200) glossy touch display
- Powered by Snapdragon, world's 1st Qualcomm 7C Gen 2 Windows OS solution
- Up to 8GB LPDDR4X RAM and 128G eMMC storage
- 1x USB 3.2 Gen 1 Type-C and 1x 3.5mm Combo Audio Jack
- Up to 10 hours battery life
- Detachable design offers 3 type of usage (Laptop, Stand, Tablet) mode for easy transformation full-size keyboard for comfortable typing experience
- Anti-bacteria on C part to indirectly protect children's health
- Garaged stylus can be used up to 45min with only 15sec charged
- 5M front-facing camera & 13M rear camera



### ExpertBook B1400/B1500

- 14/15.6" FHD (1920x1080) anti-glare display
- Up to 11th Gen. Intel® Core™ i7 processor
- Up to 48GB DDR4 RAM (on board + 1 DIMM slot) and 2TB HDD + 1TB PCIe SSD storage
- 3x USB type A, 1x USB type C full-function (Power Delivery/DisplayPort), D-SUB, HDMI, RJ45, micro SD reader, audio combo jack, Kingston lock.
- Up to 10 hours battery life
- NanoEdge slim bezel design with 90% (84% on 14 inch) screen-to-body ratio
- 180° lay flat hinge for easy screen sharing
- Built-in fingerprint sensor and physical webcam shield for added security
- Innovative NumberPad for convenient numerical input



### B3402 LTE

- 14" FHD (1920x1080) glossy touch display
- Up to 11th Gen. Intel® Core™ i7 processor
- Up to 48GB DDR4 RAM (on board + 1 DIMM slot) and 1TB PCIe SSD storage
- 1x USB 2.0 Type-A, 1x USB 3.2 Gen 1 Type-A, 2x Thunderbolt™ 4 supports display / power delivery, 1x HDMI 2.0a, 1x 3.5mm Combo Audio Jack, 1x RJ45 Gigabit Ethernet, Micro SD card reader + SIM card slot
- 360° hinge offers 4 type of usage (Laptop, Tent, Tablet, Slate mode)
- LTE connection to access the internet wherever you are (optional)
- User facing camera with privacy shield and optional 13M world facing camera
- Built-in fingerprint sensor and physical webcam shield for added security
- Innovative NumberPad for convenient numerical input



### B5302/B5402

- 13.3/14" FHD (1920x1080) touch display
- Stunning OLED panel deliver high-accuracy colour and vivid visual (optional on 13 inch)
- Up to 11th Gen. Intel® Core™ i7 processor
- Up to 48GB DDR4 RAM (on board + 1 DIMM slot) and 1TB PCIe SSD storage
- Full I/O with Thunderbolt 4.0, USB type A, HDMI, RJ45 (13 inch via micro LAN port), micro SD reader (14 inch only)
- 360° hinge offers 4 type of usage (Laptop, Tent, Tablet, Slate mode)
- Garaged stylus can be used up to 45min with only 15sec charged (optional on B5402F)
- Innovative NumberPad for convenient numerical input
- Privacy shield for camera with fingerprint sensor and power button combo for added security

1. Actual battery life depends on usage, specifications, applications and environment, among other factors.  
2. Specifications may vary by region and country.

# COLYTON GRAMMAR CASE STUDY

---





**Colyton Grammar is a school known for the academic success of their students, with a high majority of students progressing to highly reputable universities, including Oxford and Cambridge. ASUS were incredibly excited to supply Colyton Grammar School with 1,000 of our Vivobook Flip 14 TP401 convertible laptops for a 1-to-1 device scheme for their students. Our ASUS devices are used for every subject with a big focus on utilising online tools such as Microsoft Teams for remote learning and unified file storage as well as Windows Ink, which the students have made full use of with the accompanying ASUS stylus.**



*Tim Harrison, Headteacher*

**Tell us a little bit about yourself and your school**

My name is Tim Harrison and I'm head teacher at Colyton grammar school. Colyton is a 11 to 18 selective school, based in east Devon. I have been here since 2016, making this my fifth year as head teacher.

**What were your main motivations in sourcing a new IT solution?**

I think we faced the same sort of dilemma that any school will face, in terms of an aging array of equipment, which made us think, do we revamp the equipment or should we look at what we can do better? So that is when we started looking at a one-to-one device environment. For us it was about creating one ecosystem that aided everyone and therefore Windows and Teams was most applicable for our situation.

**What made you choose ASUS over others?**

When we were researching for a solution and what was on offer, ASUS I think ticked all the boxes. Our solution is robust, and we wanted something that was going to last, in terms of specifications, not something that was going to slow down and in turn, slows our students down. We wanted something that accelerated their learning and amplified the traditional approaches, which our devices do.

**What has been the initial feedback of the devices?**

There is no going back, the students use them all the time. When I go and walk around a lesson, they always have them out and flipped over so they can write their notes. The feedback from parents has been really popular as it enables them to have more of a view on what is going on and see what they are learning and the devices have really helped with that.

**How has this new solution impacted your school?**

Of course, in 2022, we got hit with global pandemic and that decision to move to a one-to-one environment, seems sort of an inspired one. With the digital technology we have, I wouldn't say we have coped with the pandemic, I think we have almost thrived. The one-to-one device solution removes the barriers to learning as they are able to access additional resources, further their understanding to stretch and challenge in every lesson.



# GAMING IN EDUCATION

Gaming has taken the world by storm. Not only with the ever growing number of Esports tournaments around the world but also how it is now perceived in education. There is now plenty of evidence backing the benefits of extracurricular activities for students such as Esports.

\*Studies have shown that those involved in extracurricular activities have become more successful in a number of ways. These include higher graduation rates, improved grades in mathematics and reading and higher attendance. Esports has also been proven to help boost students' strategic thinking, teamwork, communication, leadership and social skills.

\*Source: <https://nces.ed.gov/pubs95/web/95741.asp>







### ROG Strix G17 – G713IH-HX009T

- 15.6" FHD 240Hz display
- NVIDIA® GeForce RTX™ 3060 graphics
- Intel® Core™ i7-11370H Processor
- 1TB SDD & 16GB RAM
- Upgraded cooling solutions for peak performance



### ROG Zephyrus G15 – GA503QS-HQ003T

- 15.6" QHD 165Hz display
- NVIDIA® GeForce RTX™ 3080 graphics
- AMD Ryzen™ 9 5900HS Processor
- 1TB SDD & 32GB RAM
- Shimmer effect lid



### ASUS TUF Dash F15 – FX516PM-AZ003T

- 15.6" FHD 240Hz display
- NVIDIA® GeForce RTX™ 3060 graphics
- Intel® Core™ i7-11370H Processor
- 1TB SDD & 16GB RAM
- Upgraded cooling solutions for peak performance



### ROG Strix SCAR 17 – G733QR-HG001T

- 17.3" FHD 300Hz display
- NVIDIA® GeForce RTX™ 3070 graphics
- AMD Ryzen™ 7 5800H Processor
- 1TB SDD & 16GB RAM
- RGB keyboard and lightbar



### ROG Strix GA15 – G15DH-UK088T

- AMD Ryzen™ 5-3600X Processor
- NVIDIA® GeForce GTX™ 1660 Ti graphics
- 1TB SDD & 8GB RAM
- Transparent side panel and RGB lighting
- Keyboard and mouse included



### ROG Strix GT35 – G35CZ-UK007T

- NVIDIA® GeForce RTX™ 3070 graphics
- Intel® Core™ i7-10700KF Processor
- 256GB SSD + 2TB HDD storage
- 16GB RAM
- Transparent side panel and RGB lighting

# DESKTOPS

ASUS offers a wide range of desktop solutions that cater to the diverse needs of teachers and students, providing features to ensure rich learning experiences.



ASUS World's No. 1 motherboard



100% solid capacitors



Full expandability



Rock-solid security



Designed for tool-free upgrading and servicing



## ExpertCenter D5 SFF

- Up to Intel® Core™ i5-11500 Processor
- Intel® B560 Chipset
- Windows 11 Pro
- Up to NVIDIA® GeForce® GT1030 GPU
- Up to 32GB DDR4 U-DIMM RAM and 1TB SSD storage
- Front I/O ports: 1 x headphone port, 1 x 2-in-1 card reader SD/MMC, 1 x 3.5mm combo audio jack, 2 x USB 3.2 Gen 1 Type-A, 2 x USB 3.2 Gen 2 Type-A
- Kensington lock



## ExpertCenter D7 SFF

- Up to Intel® Core™ i7-11700 Processor
- Intel® B560 Chipset
- Windows 11 Pro
- Up to NVIDIA® GeForce® T600 GPU
- Up to 128GB DDR4 U-DIMM RAM and 2TB SSD storage
- Front I/O ports: 1 x headphone port, 1 x 3.5mm combo audio jack, 1 x USB 2.0 Type-A, 2 x USB 3.2 Gen 1 Type-A, 2 x USB 3.2 Gen 2 Type-A, 1 x USB 3.2 Gen Type-C
- Kensington lock



## ExpertCenter D500 series

- Up to Intel® Core™ i7 processor
- Intel® H310C chipset
- Windows 10 Pro / Home
- Intel® HD Graphics
- 2 x DIMM SLOT, DDR4 2666MHz, support max 32GB
- Up to 2TB HDD, up to 512GB
- Kensington lock

# ALL-IN-ONE

ASUS All-in-One PCs feature space-saving design, a stunning NanoEdge display, a perfectly balanced hinge, and powerful performance — all perfectly suited to a variety of student needs and learning environments.



Best-in-class performance



Powerful speakers



Dual storage



NanoEdge display



Fast connectivity



## ASUS AiO V241

- ASUS Splendid & Tru2Life Video-vibrant, vivid display
- Up to Intel® Core™ i7-8565U processor
- Windows 10 Pro
- 23.8" 16:9 Full HD (1920x1080) anti-glare panel with slim bezel and up to 88% screen-to-body ratio
- NVIDIA® GeForce® MX130, 2GB GDDR3
- Up to 16GB DDR4 RAM
- Up to 1TB HDD + 512GB PCIe SSD
- Wide 100% sRGB gamut for vivid and realistic-looking colors
- SonicMaster-ultimate audio experience with huge stereo sound with two stereo speakers
- Optional multi-touchscreen



## ASUS AiO 22 V222

- ASUS Splendid & Tru2Life Video-vibrant, vivid display
- Up to 10th gen Intel® Core™ i7-10510U processor
- Windows 10 Pro
- 21.5" 16:9 Full HD (1920 x 1080) NanoEdge Panel with slim bezel and up to 87% screen-to-body ratio
- Up to NVIDIA® GeForce™ MX110, GDDR5 2G VRAM
- Up to 8GB DDR4 2400Mhz
- Up to 1TB HDD + 512GB PCIe SSD
- Wide 100% sRGB gamut for vivid and realistic-looking colors
- SonicMaster-ultimate audio experience with huge stereo sound with two 3W stereo speakers
- Optional multi-touchscreen



## ExpertCenter E5 AiO 22 / 24

- 21.5"/23.8" FHD (1920x1080) anti-glare display. Touch screen optional
- Up to Intel® Core™ i7-11700B Processor
- Intel® HM570 Chipset
- Windows 11 Pro
- Up to 32GB DDR4 SO-DIMM RAM and 2TD HDD, 512GB SSD
- Additional 5.64" FHD (1920x1080) display (optional)
- Up to 720p HD Camera

# DISPLAYS

ASUS monitors boast a range of sizes for various scenarios and specs for all users. Including full HD resolution, high refresh rates and low blue light filters to protect your eyes.



## ASUS BE24EQK

- 23.8" Full HD frameless IPS panel with wide viewing angles
- Integrated Full HD webcam, mic array and stereo speakers
- DisplayPort, HDMI, D-sub, Audio in, Earphone jack
- Low Blue light filter for comfortable viewing



## ASUS BE24EQSB

- 23.8" Full HD frameless IPS panel with wide viewing angles
- DisplayPort, HDMI, D-sub, Audio in, Earphone jack and four USB 3.0 ports
- Ergonomic design with +35° ~ -5° tilt, ±180° swivel, ±90° pivot and 130mm height adjustments
- Low Blue light filter for comfortable viewing



## ASUS VP229HE

- 21.5" Full HD LED backlight display with wide viewing angles
- Up to 75Hz refresh rate with Adaptive-Sync/FreeSync™ technology
- Extensive connectivity including HDMI and D-sub ports
- Low Blue light filter for comfortable viewing



# MINI PC'S & MEETING HARDWARE

ASUS Mini PC's and meeting hardware is versatile and smart, allowing for quick and seamless functionality, with the added bonus of being discrete in your workplace.



## Chromebox 4

- Powered by 10th Generation Intel® Core™ or Celeron® processors.
- Supports up to three 4K displays with dual HDMI 2.0 and USB-C®.
- Extensively tested for 24/7 reliability to ensure long-term dependability.
- Locking VESA mount kit included for a tidy, clutter-free workspace.



## ASUS Google Meet Hardware

- Versatile smart, one-touch video-conferencing solution with HD visuals
- Three hardware kits in a pack to suit any meeting room
- Powered by an Intel® Core™ i7 processor
- Includes Google Meet Speakermic for 360 sound, touchscreen control panel or remote control and UHD camera\*
- \*Large Room Kits are not supplied with a camera. A PTZ Pro 2 can be purchased separately.



## ASUS PN Series Mini PCs

- Powered by 10th/11th Generation Intel® Core™, Pentium or Celeron® processors. AMD Ryzen™ 5000 Series Mobile Processors also available.
- Supports up to four 4K displays
- Modern space saving design, measuring 115x115x49mm (0.62l)
- Extensively tested for 24/7 reliability to ensure long-term dependability.
- Locking VESA mount kit included for a tidy, clutter-free workspace.

# ACCESSORIES



## ProArt Mouse MD300

- Smart dial and side scroll
- Independent middle key
- Allows glass tracking with up to 4200 dpi
- Up to 150 days on a full charge
- Quick charge – up to 8 hours of light use from 1 minute charge



## ProArt Mouse MD300

- Magnetic corners provide invisible anchors
- Complimentary magnetic clip
- ASUS AntiBacterial Guard coating
- Optimised surface pattern for precise control
- Non-slip silicone base



## SimPro Dock 2

- 3 x USB 3.0 Downstream port for computer side and 1 x Type-C
- 1 x Type-C Upstream port for computer side
- 1 x MIC in port\*1, 1 x Audio out port, 3 x USB 3.0 port up to 10Gbps, 1 x USB 3.0 Charging port, 1 x VGA port, 1 x Standard HDMI port2.0, 1 x 10/100/1000M LAN port, 1 x DC-in jack, 1 x Thunderbolt 3.0, 2 x Display 1.4, 1 x Smart card reader
- Video resolution: DVI-I Single Output: 7680\*4320 (16:9), Dual Ext. Output: 3840\*2160 (16:9), HDMI Single Ext. Output: 3840\*2160 (16:9), VGA Single Ext. Output: 1920\*1080 (16:9)
- WxDxL(mm): 99x161.5x40.6 / 650g light



## 65W USB-C Adapter

- Compact and portable design
- USB Type-C connector with USB PD 3.0 technology that automatically detects and supplies 5V/3A, 9V/3A, 15V/3A and 20V/3.25A output
- Multiple output protection, including Over Voltage Protection (OVP), Over Current Protection (OCP), Over Temperature Protection (OTP) and Short Circuit Protection (SCP)
- Complies with worldwide health and safety regulations
- Tested and adheres to strict ASUS quality standards



## W5000 wireless keyboard & mouse

- Compact keyboard with a stylish metal-like finish and ultra-thin 11mm profile
- Features rubber dome switches with 10-million-keystroke durability and silent keystrokes
- Energy-efficient and operates on the 2.4GHz band for a reliable connection
- USB dongle slot on the underside of the mouse for safekeeping
- Available in three distinct colours (black, silver with white keys, silver with black keys)



### Dual 4K USB-C Dock

- 1 x USB 3.2 Gen2 Type-C Upstream port for computer sideport (10Gbps / DP1.4 / output: up to 85W)
- 1 x USB 3.2 Gen2 Type-C port (10Gbps / 5V 0.9A), 1 x USB 3.2 Gen2 Type-C port (input :PD 100W / DP1.4 / 5Gbps / 5V 0.9A), 1 x HDMI 2.0 with a maximum output resolution of 3840x2160 @60Hz, FHD @144Hz, 1 x RJ-45 (Gigabit) port, 1 x USB 3.2 Gen2 Type-A port (10Gbps/5V 1.5A)
- Supports HDMI & USB-C Dual output simultaneously at resolution of 4K@30Hz
- LxWxD(mm): 104x44x14 / 98g light
- 15cm cable length



### U65W-01 Universal Mini Multi-tips Adapter

- Plug and charge convenience at any power point
- Three different connector tip sizes ensure compatibility with an array of devices
- Compact, travel-friendly dimensions (6.6 x 6.6 x 2.85cm, adapter only)



### Nereus Carry Bag

- Fits any notebook up to 16" in screen size
- Adjustable and removable strap can be stowed in the bag
- Rear strap secures easily to trolley handles
- Minimalist elegant design for those who want to travel light



### Chromebook sleeve 11.6

- Fits up to an 11.6-inch laptop: Total weight is less than 200 g and there's an easy-access 11.6" pocket for tablets.
- Water-repellent: A water-repellent 600D polyester exterior and laser-engraved zippers help protect devices from dirt and rain.
- Front pocket: The outside compartment has front pockets for pens and accessories.
- Durable fixed inner straps: The fixed interior straps help keep an enclosed device in the open, upright position.

# SERVERS



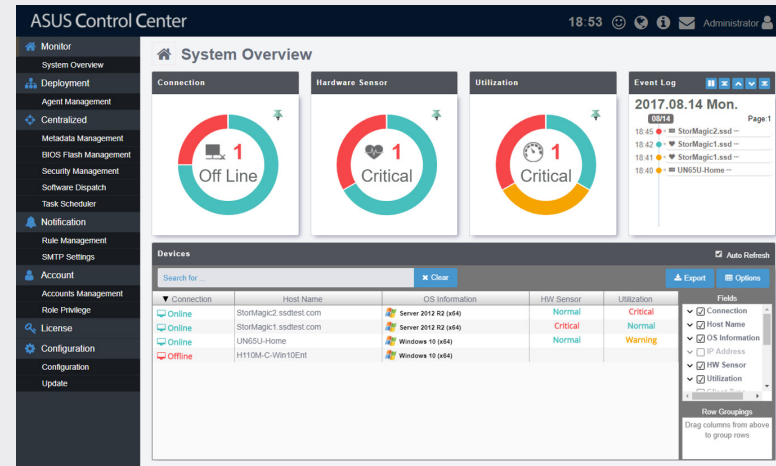
### ESC N4A-E11

- NVIDIA® HGA A100 with four Tensor Core GPUs delivers 80 teraFLOPS of FP64 for HPC workloads
- Fueled by a single AMD EPYC 7003 series processor supporting TDP of 280 W
- Optimized thermal design enables 400 W GPUs for better AI, simulation and data-analytics performance
- Direct GPU-to-GPU interconnect via NVLink delivers up to 200 GB/s bandwidth for efficient scaling
- Energy-efficient design with independent CPU and GPU-airflow tunnels for power savings
- Three PCIe® 4.0 expansion slots support 200 GB Mellanox HDR InfiniBand smart network interface controller
- High-throughput performance via NVIDIA GPU Direct Storage with four 3.5-inch drive bays and one onboard M.2
- 3000 W 80 Plus Titanium power supply reduces operating costs and enables easier servicing
- Onboard ASUS ASMB10-iKVM with ASPEED AST2600 controller for out-of-band management
- Integrated PFR FPGA as the platform Root-of-Trust solution for firmware resiliency



# SOFTWARE

ASUS software simplifies asset-management processes for IT staff, as well as for students and educators.



## ASUS Control Center

### Comprehensive centralized IT management

ASUS Control Center is a centralized IT management suite designed to enhance productivity and security by offering a comprehensive set of controls via a user-friendly interface.



HARDWARE & SOFTWARE MONITORING



ADVANCE SEARCH AND GROUPING



TASK SCHEDULER



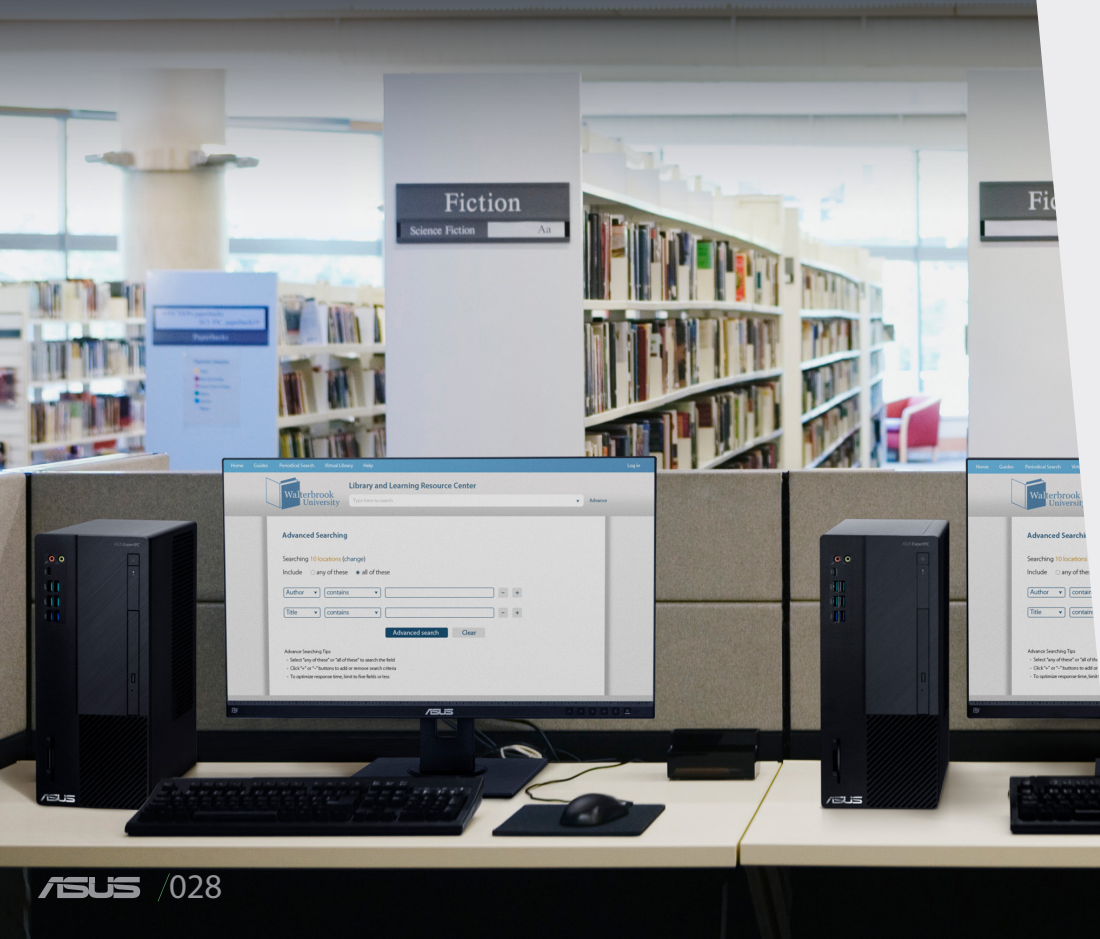
EFFICIENT ENERGY CONTROL



ENHANCE SECURITY



INTUITIVE USER INTERFACE



# ASUS Business Manager

## Simple PC management

ASUS Business Manager is a PC-based platform consisting of hardware and firmware that provides unique security and productivity capabilities for educators and students.



SYSTEM BACKTRACK



MY LOGO



SECURE DRIVE



FILE SHREDDER



DEVICE LOCK

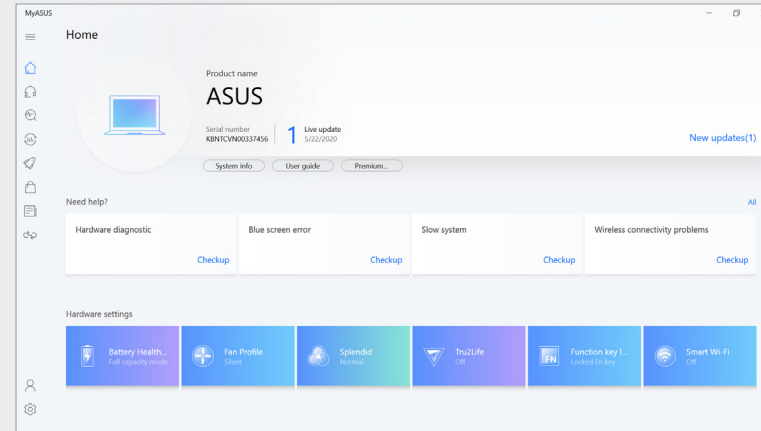


SYSTEM RESTRICTION

# MyASUS

## One-stop portal of ASUS-developed software tools and services

MyASUS is an exclusive app that helps you easily communicate with customer service, monitor repair status and access product instruction manuals, among other capabilities.



- System Diagnosis
- Hardware settings
- Customer service
- ASUS AppDeals
- Link to MyASUS



## AI Recovery

### Effectively set up all devices

AI Recovery is software that helps IT administrators create e-classrooms and allows for easy deployment, set-up and recovery of all devices.



## ASUS Cloud

### Ultimate online resource management

ASUS Cloud is a platform that integrates with multiple learning applications, providing rich and active learning experiences for students while making class management easier for educators. It also allows students and educators to store and access all their learning materials, making sharing as effortless as ever.

# ASUS PREMIUM CARE SERVICES

## Hassle free, peace of mind for Education.

Asus premium care services go beyond standard warranty, to provide the assurance of maximum protection with minimal effort. It's the peace of mind you need so that you can get things done without compromising productivity or mobility.



MINIMISED  
DOWNTIME



INCREASED  
EFFICIENCY



REDUCED  
COSTS







## Comprehensive Support

Nobody knows your devices better than our own Asus hardware experts do. That is why they are only a phone call away to help you get the best out of your devices and assist you when you need support from trouble-shooting, diagnostics and more.



## Warranty Extensions

Keep that peace of mind feeling going for up to 5 years<sup>1</sup>, with an Asus extended warranty<sup>2</sup>. Ideal if you are planning to deploy your products for a longer period.



## Next Business Day (NBD) Repair

Minimise disruptions by investing in NBD service. Eliminate the hassle of laptop drop offs and pick-ups.



## Laptop Accidental Damage Protection (ADP)

ADP gives you the assurance that should your laptop be subject to accidental damage from events such as liquid spills, electrical surges, drops and falls, you will be covered, with no excess to pay.



## Keep My Drive

In the unlikely event that the original storage drive requires replacement, Keep My Drive allows you to retain the defective drive and receive a replacement, installed by an authorised Asus technician.



## Battery Back Up

Extend the warranty of your battery to match the warranty of the laptop with Battery Back Up. You will be entitled to one battery replacement during the warranty period, as a result of any manufacturing defects.

1. Service and warranty coverage may vary depending on country and territory and may change without notice. Please check with your supplier for exact offers.

2. Must be purchased and activated within 90 days of your ASUS product purchase date.

# ASUS Education

For more information about ASUS Education solutions, please contact us on [Nordic\\_B2B\\_EDU@asus.com](mailto:Nordic_B2B_EDU@asus.com)



DOWNLOAD  
ASUS BUSINESS SOLUTION K-12 EDUCATION  
BROCHURE AT

[WWW.ASUS.COM/BUSINESS](http://WWW.ASUS.COM/BUSINESS)